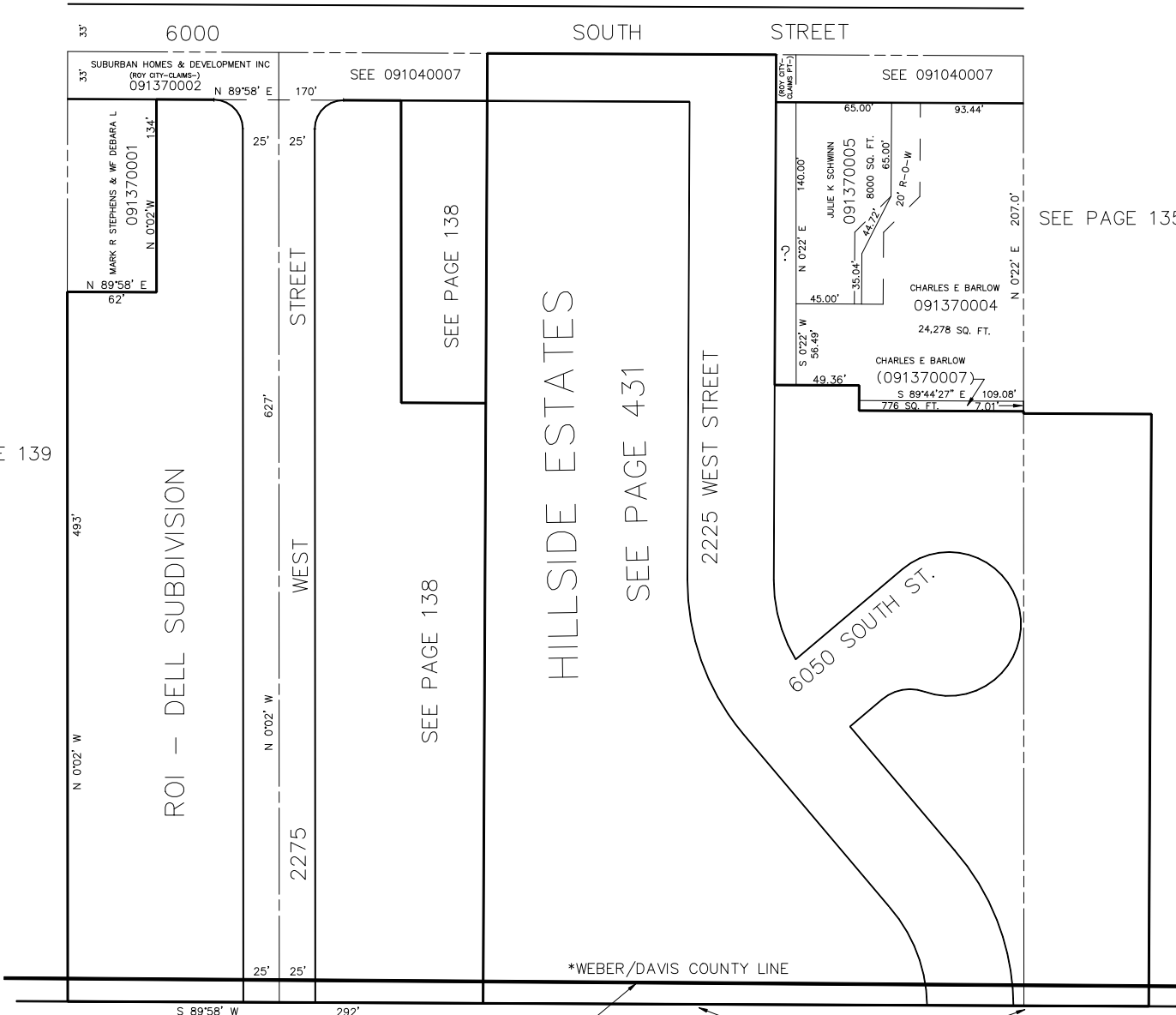


NW 1/4 OF NW 1/4 OF SE 1/4
 SECTION 23, T.5N., R.2W., S.L.B. & M.

TAXING UNIT: 41

IN ROY CITY
 SCALE 1" = 60'

SEE PAGE 109



SEE PAGE 139

SEE PAGE 135

*RETRACTED WEBER/DAVIS COUNTY LINE
 BK 56 PGS 88-92 E#1885948

SOUTH LINE OF SUBDIVISION